

SAITAMA

Just North of Tokyo

Saitama Prefecture Pre-games Training Camp Guide

Tokyo 2020 Olympic and Paralympic Games
Rugby World Cup 2019



WELCOME TO Saitama.

Saitama Prefecture is an attractive region where you can enjoy both the conveniences of urban functions and the peacefulness of the rural landscape.

Located directly to the north of Tokyo, the prefecture offers convenient access to the Olympic Village in Harumi and international airports in Narita and Haneda. In addition, many different sport facilities are available, and Saitama has been host to numerous major sports events, including the FIFA World Cup and FIBA Basketball World Cup. Many residents of Saitama, especially the children, enjoy a variety of sports, and we boast the largest number of sports junior league members in Japan.

In addition to the 2019 Rugby World Cup, Saitama will host venues for basketball, soccer, golf, and shooting for the Tokyo 2020 Olympic and Paralympic Games.

One of the strengths of Saitama is that it allows athletes to do their pre-games training in an environment that is close to the actual environment of the Games.

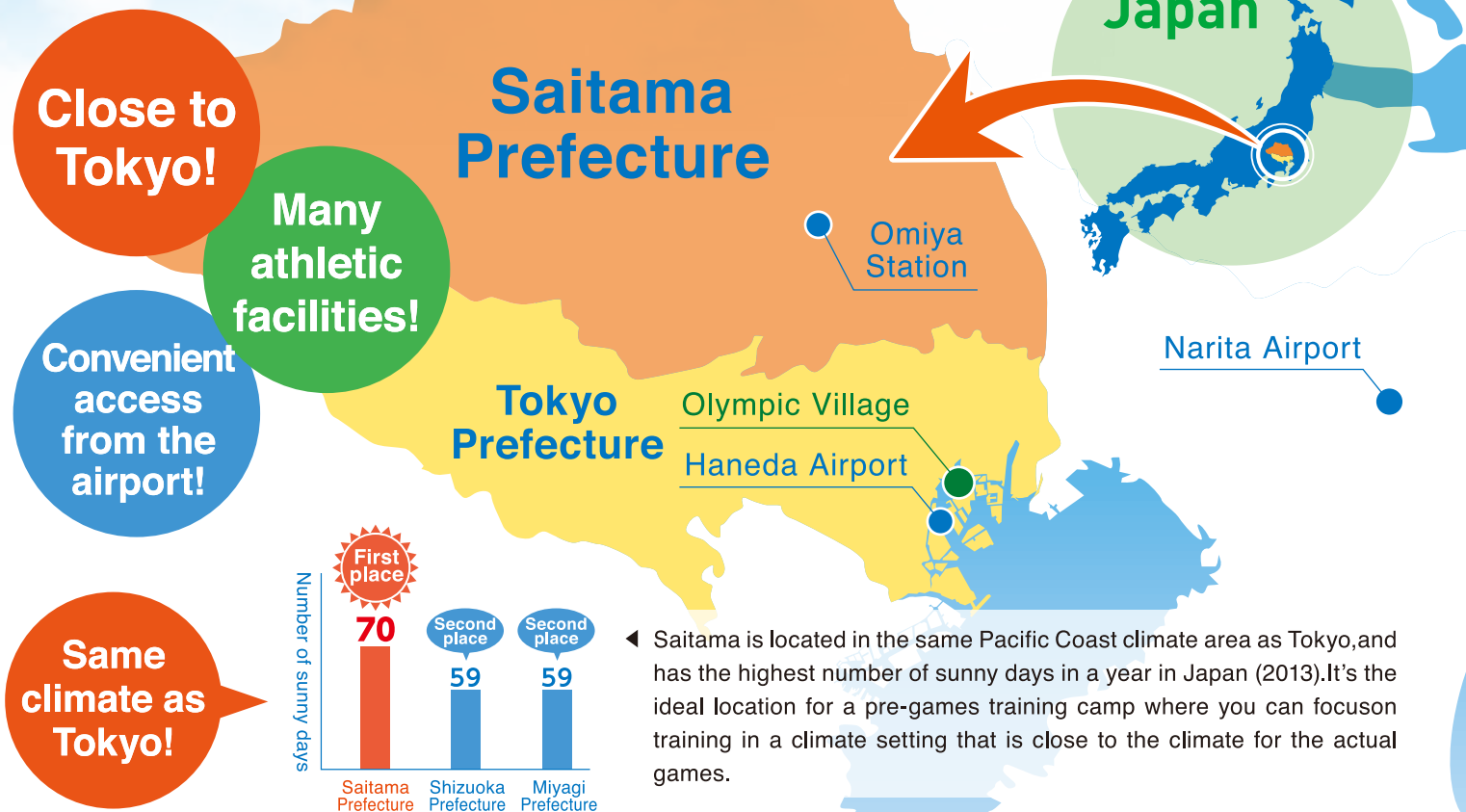
All of us here in Saitama will provide our heartfelt support so that you can be at your best during the Games. Please come to Saitama for pre-games training!



Kiyoshi Ueda
Governor of
Saitama Prefecture

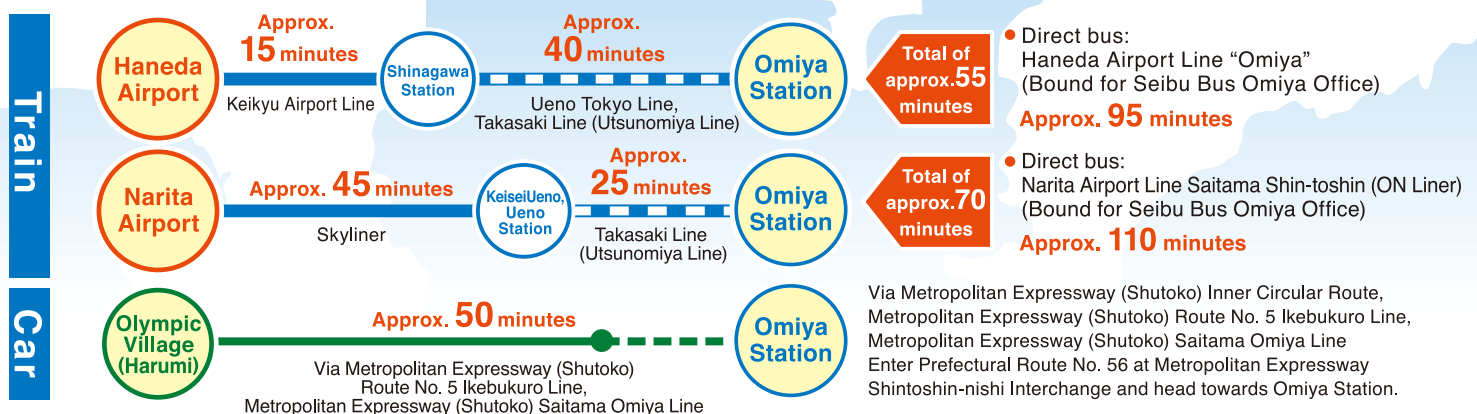
Saitama, the Perfect Location for a Training Camp

Saitama Prefecture is conveniently located directly to the north of Tokyo. This is an area where beautiful townscapes coexist with abundant nature. Why don't you choose Saitama for your pre-games training camp in 2019 and 2020?



Access by Public Transport

*To Omiya Station. The times will differ depending on the traffic conditions.
*The times shown do not include time required for transfers.



Major Potential Pre-games training Camp facilities

<p>1 Football</p>  <ul style="list-style-type: none"> - Field area 8776 m² - Natural grass - Lighting facilities <p>Saitama City Omiya Park Soccer Field</p>	<p>2 Basketball</p>  <ul style="list-style-type: none"> - Main arena 3360m² (three basketball courts) - Sub arena 800m² (one basketball court) - Cooling and heating facilities <p>Tokorozawa Municipal Gymnasium</p>
<p>3 Shooting</p>  <ul style="list-style-type: none"> - Large caliber rifle shooting range (Max. 300 m × 10 shooting booth) - Large caliber rifles - Slugs - Pistol shooting range (50 m × 5 shooting booths) - Small caliber rifle shooting range (50 m × 50 shooting booths) - Air gun shooting range (10 m × 50 shooting booths) <p>Saitama Nagatoro Shooting Range</p>	<p>4 Rugby</p>  <ul style="list-style-type: none"> - Three rugby fields - Natural grass - Rugby World Cup 2019 competition venue - Track and field stadium (Authorized as Category 1 Athletics Stadium by the Japan Association of Athletics Federations) - Gymnasium 3327 m² <p>Kumagaya Sports Culture Park Rugby Field</p>
<p>5 Volleyball</p>  <ul style="list-style-type: none"> - Main arena 2627 m² (three volleyball courts) - Sub arena 770m² (one volleyball court) - Cooling and heating facilities - Beach volleyball court nearby (one court) <p>Fukaya City Gymnasium (Big Turtle)</p>	<p>6 Swimming</p>  <ul style="list-style-type: none"> - 50 m × 10 lanes (Depth: 2 m) - Domestic standard competition pool approved by the Japan Swimming Federation <p>Rikkyo University St. Paul's Aquatic Center</p>
<p>7 Field hockey</p>  <ul style="list-style-type: none"> - One hockey field - Artificial turf - Lighting facilities <p>Hanno City Azu Sports Park Hockey Field</p>	<p>8 Rowing</p>  <ul style="list-style-type: none"> - 2000 m × 6 lanes - Venue during the Tokyo 1964 Olympic Games <p>Toda Rowing Course</p>
<p>9 BMX</p>  <ul style="list-style-type: none"> - Entire length of course: 345 m - Training course (220 m) - Automatic time measurement equipment <p>Chichibu Takizawa Cycle Park BMX Course</p>	<p>10 Sport Climbing</p>  <ul style="list-style-type: none"> - Area 1292 m² - Moveable climbing wall (two walls, height 13m × width 4m) (two walls, height 12m × width 4m) - Bouldering wall (one wall, height 3.6 m × width 5 m) <p>Kazo City Civic Gymnasium</p>
<p>11 Judo, Karate, Taekwondo</p>  <ul style="list-style-type: none"> - Main arena 1887 m² (eight judo mats, four karate mats) - Dojo No.1 810 m² (three judo mats) - Cooling and heating facilities <p>Saitama Prefecture Budokan</p>	<p>MAP</p>  <p> ■ Pre-games training Camp Candidate Facility ★ ★ Host arena </p>

Tokyo 2020 Olympic and Paralympic Games venue

A Saitama Stadium 2002



Saitama Stadium 2002 is the largest soccer stadium in Asia with a capacity of approx. 60,000 people where the 2002 FIFA World Cup Semifinals and the 2006 FIFA World Cup Asia qualification were held. The stadium has securely established its position as the main stadium for Team Japan.

B Saitama Super Arena



The largest multi-purpose hall in Japan. The seats, stage, floor, and ceilings are all moveable, making it possible to show the passion of the athletes to all of audience. In 2006, the final round of the Basketball World Championships was held here.

C Kasumigaseki Country Club



Photo by Koji Aoki/AFLO

Both courses have a highly strategic design created by famous designers from Japan and England. The East course was renovated by C.H. Alison and the West course was designed by Seiichi Inoue.

D Asaka Shooting Range



A representative shooting range in the Kanto area. They are currently preparing an Olympic and Paralympic standard temporary facility.

Venue of the Rugby World Cup 2019



E Kumagaya Sports Culture Park Rugby Field

● **Dates:** September 20 thru November 2, 2019

With three full sized fields of natural grass, this venue has become a special place for Rugby in Japan, where many matches have been held including the domestic Top League tournaments, and the National High School Rugby Tournament held every spring. Renovations are currently under way to meet World Cup standards.

● **Column:** Kumagaya is Rugby Town!

The site of many heated matches and home to a prestigious school for high school rugby, Kumagaya City is famous for being a Rugby City where the passion for rugby is deeply rooted in its residents.

Contact
(for detailed information)

Please refer to our website for detailed information regarding pre-games training camps in Saitama. We provide much more information on our website, so please be sure to check out the link below.

URL <http://www.pref.saitama.lg.jp/oly-para/eng/> (Scheduled to open February 2016)

E-mail a2880-01@pref.saitama.lg.jp

Olympic and Paralympic Section, Saitama Prefecture Resident Life Department



This material was produced using environmentally friendly methods.